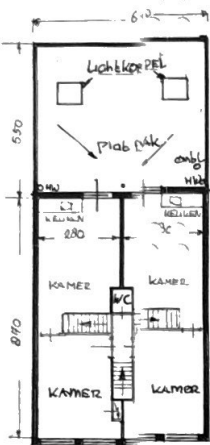
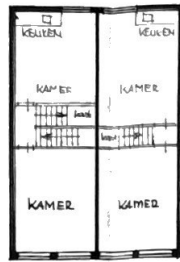


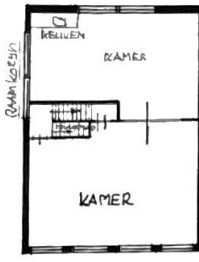
BEGANE GROND
BESTAAND TOESTAND



1e VERD
BEST. TOESTAND

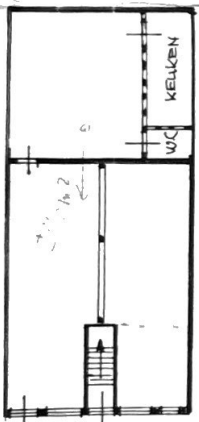
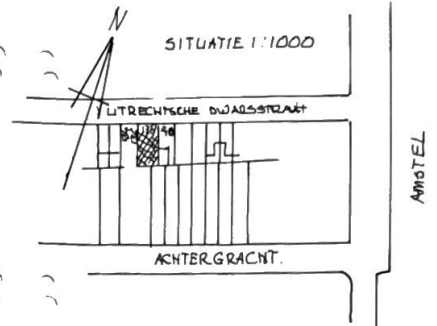


2e VERD
BEST. TOESTAND

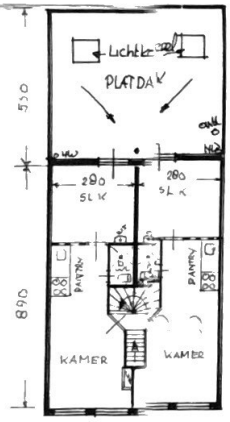


3e VERD.
BEST. TOESTAND

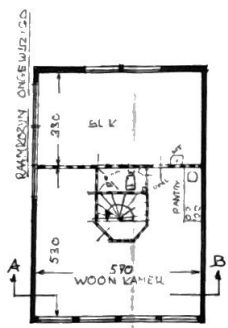
Remoni: Bestaande binnen wanden van hout
4.25 binnen aan in pandig op knip
KLEWETDE TW STALW ELEKTRA, KEUKENS,
RISICOEN EN WIL-BIEN ENZ
VOORGEVEL + ACHTERGEVEL ONGEWIJZIGD



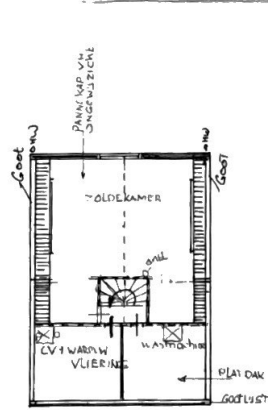
BEG. GROND
ONGEWIJZIGD



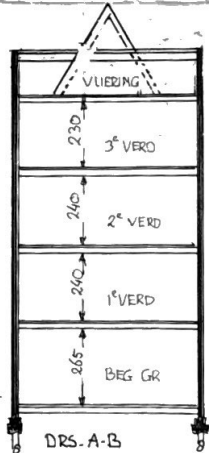
1e + 2e VERD
NW TOESTAND



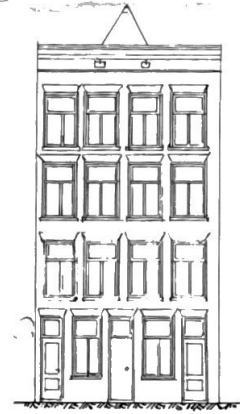
3e VERD.
NW TOESTAND.



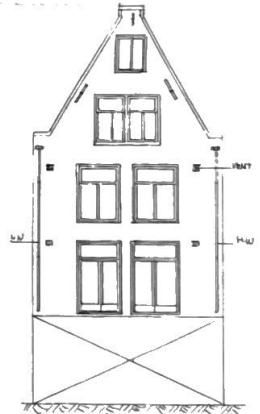
VLIERING ONGEWIJZIGD.



DRS. A-B



VOORGEVEL
ONGEWIJZIGD.



ACHTERGEVEL
ONGEWIJZIGD.

INPANDIG VERBOUWEN EN HERSTELLEN
VAN PERCEEL UTRECHTSE DWARSSTR. 138 A'DAM

AANNEMERSBEDRIJF SLEMMER EN ZN BV	dd 1-6-97
GEYLE WEG 35 1032AT AMSTERDAM	SCH 1:100
020 6861781 TEL	GET BS
020 6840841 FAX	